

Q P 4 4 2 P

1PH, 220/240V – 50Hz

Application Range

Compressor Cooling	Natural	
Eva. Temp. Range	-10°C ~ 12°C	14°F ~ 54°F
Condensing Temp.	65°C max.	149°F max.
Return Gas Temp.	35°C max.	95°F max.
Discharge gas Temp.	115°C max.	239°F max.
Motor Wire Temp.	130°C max.	266°F max.

Rated Performance

Capacity	26,000/26,100 Btu/h	7,620/7,650 W
Motor Input	2,430/2,534 W	
Current	11.4 / 11.5 A	
EER	10.7 / 10.3 Btu/W.h	3.14/3.02 W/W

Compressor Data

Design	Rolling Piston Typed Rotary
Displacement	44.2 cc/rev 2.70 in /rev
Oil / Oil Charge	SUNISO 4GSI or ATMOS M60 / 700 cc
Weight	22.4 Kg 49.4 lb

Motor Data

Motor Type	2 Pole Induction (PSC)
Rated Output	2,300 W
Winding Resistance	Main 1.08 ± 7% Ω
(at 25°C)	Sub 2.40 ± 7% Ω
Voltage Range	198 V to 264 V
Locked Rotor Amps.	66 A

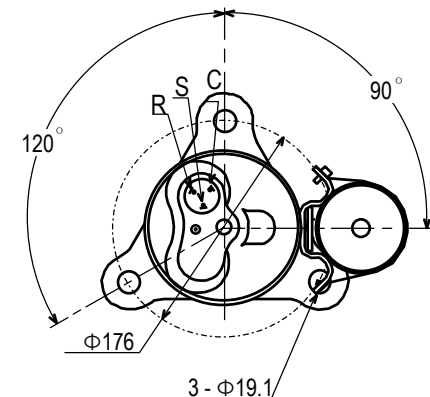
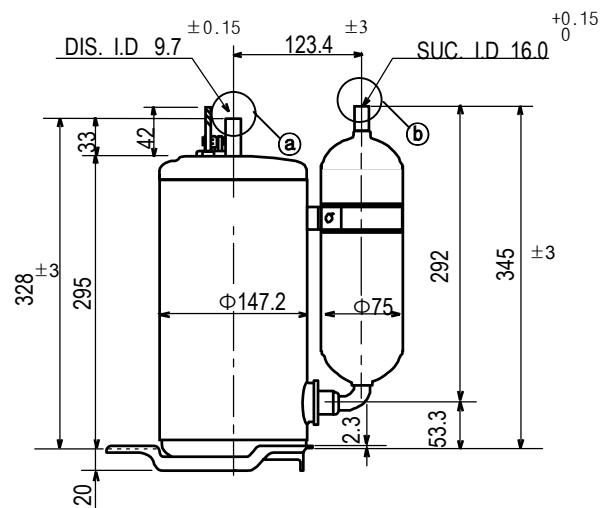
Electrical Components

Running Capacitor	50 μF 400 VAC
Overload Protector	Internal Type

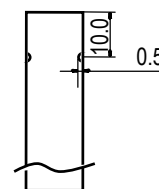
Capacity Test Conditions

Evaporating Temp.	7.2°C	45°F
Condensing Temp.	54.4°C	130°F
Return Gas Temp.	35.0°C	95°F
Liquid Temp.	46.1°C	115°F
Ambient Temp.	35.0°C	95°F

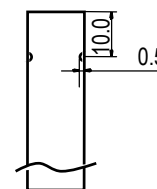
Standard Dimensions



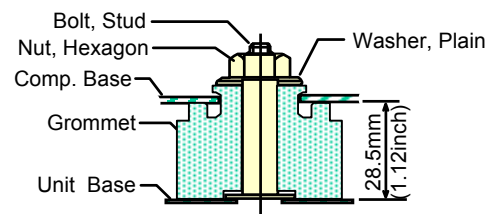
Detail of ①



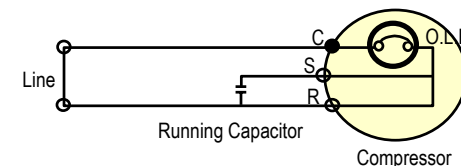
Detail of ②



Compressor Mounting



Wiring Diagram



※ C.S.R mark is embossed on a Cover Terminal