

Q K 1 6 4 P

1PH, 220/240V – 50Hz

Application Range

Compressor Cooling	Natural	
Eva. Temp. Range	-10°C ~ 12°C	14°F ~ 54°F
Condensing Temp.	65°C max.	149°F max.
Return Gas Temp.	35°C max.	95°F max.
Discharge gas Temp.	115°C max.	239°F max.
Motor Wire Temp.	130°C max.	266°F max.

Rated Performance

Capacity	9,300/9,400 Btu/h	2,725/2,755 Watts
Motor Input	877/895 W	
Current	4.1/4.0 A	
EER	10.6/10.5 Btu/W.h	3.11/3.08 W/W

Compressor Data

Design	Rolling Piston Typed Rotary	
Displacement	16.4 cc/rev	1.00 in ³ /rev
Oil / Oil Charge	SUNISO 4GSI / 280 cc	
Weight	11.5 Kg	25.4 lb

Motor Data

Motor Type	2 Pole Induction (PSC)
Rated Output	780 W
Winding Resistance	Main 3.51 ± 7% Ω
(at 25°C)	Sub 3.67 ± 7% Ω
Voltage Range	198 V to 264 V
Locked Rotor Amps.	22 Amps.

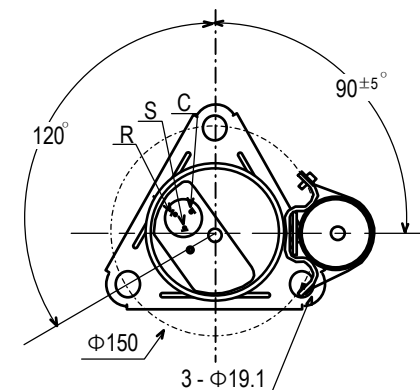
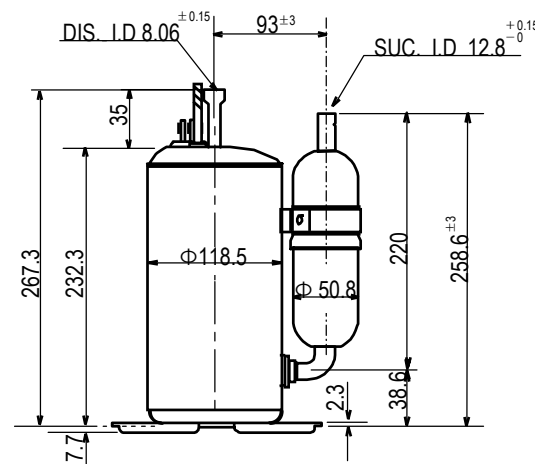
Electrical Components

Running Capacitor	35 μF 370 VAC
Overload Protector	MRA 98776 – 12026 (Texas Instruments)

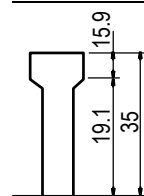
Capacity Test Conditions

Evaporating Temp.	7.2°C	45°F
Condensing Temp.	54.4°C	130°F
Return Gas Temp.	35.0°C	95°F
Liquid Temp.	46.1°C	115°F
Ambient Temp.	35.0°C	95°F

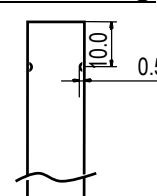
Standard Dimensions



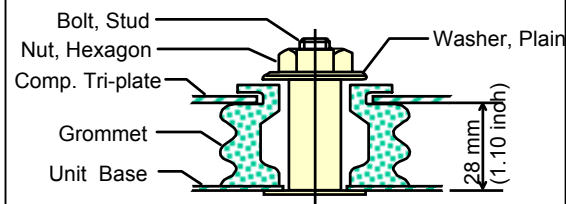
Detail of ①



Detail of ②



Compressor Mounting



Wiring Diagram

