

Q P 4 0 7 P

1PH, 220/240V – 50Hz

Application Range

Compressor Cooling	Natural	
Eva. Temp. Range	-10°C ~ 12°C	14°F ~ 54°F
Condensing Temp.	65°C max.	149°F max.
Return Gas Temp.	35°C max.	95°F max.
Discharge gas Temp.	115°C max.	239°F max.
Motor Wire Temp.	130°C max.	266°F max.

Rated Performance

Capacity	24,000/24,100 Btu/h	7,033/7,062 Watts
Motor Input	2,286/2,363 W	
Current	A	
EER	10.5 / 10.2 Btu/W.h	3.08/2.99 W/W

Compressor Data

Design	Rolling Piston Typed Rotary	
Displacement	40.7 cc/rev	2.48 in ³ /rev
Oil / Oil Charge	SUNISO 4GSI or ATMOS M60 / 700 cc	
Weight	22.4 Kg	49.4 lb

Motor Data

Motor Type	2 Pole Induction (PSC)
Rated Output	Not Fixed W
Winding Resistance (at 25°C)	Main Not Fixed Sub Not Fixed
Voltage Range	198 V to 264 V(at max condition)
Locked Rotor Amps.	Not Fixed Amps.

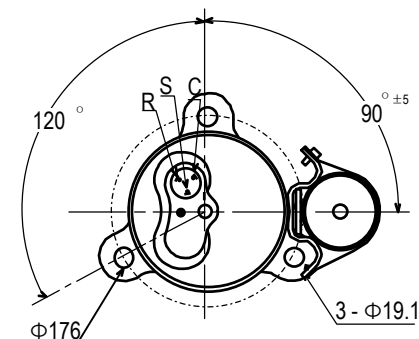
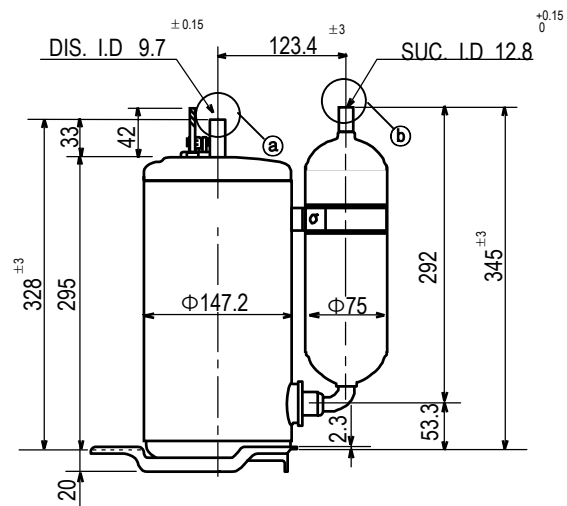
Electrical Components

Running Capacitor	50 μ F	400 VAC (Not Fixed)
Over load Protector	Internal Type	

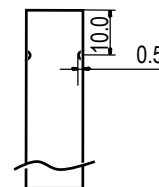
Capacity Test Conditions

Evaporating	Temp.	7.2°C	45°F
Condensing	Temp.	54.4°C	130°F
Return Gas	Temp.	35.0°C	95°F
Liquid	Temp.	46.1°C	115°F
Ambient	Temp.	35.0°C	95°F

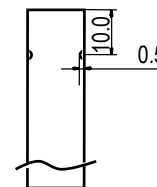
Standard Dimensions



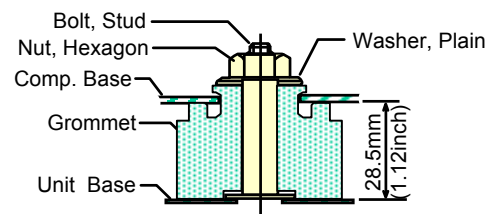
Detail of ①



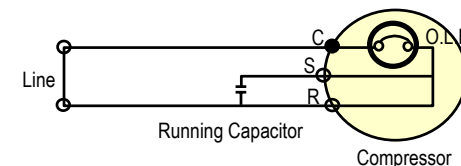
Detail of (b)



Compressor Mounting



Wiring Diagram



※ C.S.R mark is embossed on a Cover Terminal

Specifications are subject to change without notice.

Normal Performance value $\pm 5\%$.

Air Conditioning Compressor Division