

R-410A

The 200RD is a pilot-operated, 2-way, normally closed, solenoid valve that is suitable for all refrigerants, including R-410A. 200RD valves are used for liquid, discharge, or suction gas refrigerant service.

Features

- One coil fits all valve sizes
- Extended ends for easy installation (standard)
- Long-life molded coils
- PTFE O-ring for superior external sealing

Options

- Available in 7 orifice sizes
- Manual stem or mounting stud
- Bi-Flow operation-conversion either factory assembled or with kit except 200RD7 and 200RD9

Nomenclature example: 200RD 4T3M VLC

| 200R | D | 4 | T | 3 | M | VLC |
|--------------|---------------|----------------------|---|---------------------------|---|-------|
| Valve Series | Design Series | Port Size (in 1/16") | Connection Type T = Copper Extended Ends | Connection Size (in 1/8") | M = manual stem T = mounting stud (optional) | Coil* |

*NOTE: Valves are shipped without the solenoid coils (VLC = Valve Less Coil). See available coil assemblies.

Specifications

- Maximum fluid temperature: 250°F
- Maximum working pressure: 680 psig
- Minimum operating pressure drop: 2 psi
- MOPD: 550 psig
- UL/CUL file number: MP604

NOTE: Mounting enclosing tube more than 90° off vertical up position is not recommended.



Ordering Information and Nominal * Liquid Capacity - Tons (kW)

| PCN | | | Description | Connection Size | R-410A | R-744 |
|----------------|----------------------------|--------------------------|-------------|-----------------|-------------|---------------|
| Standard Valve | Mounting Stud ¹ | Manual Stem ² | | | | |
| 066158 | 066179 | — | 200RD 2 T 2 | 1/4 ODF | 3.4 (11.9) | 8.16 (28.7) |
| 066159 | 066180 | — | 200RD 2 T 3 | 3/8 ODF | | |
| 066160 | — | — | 200RD 3 T 2 | 1/4 ODF | 4.5 (15.8) | 10.86 (38.2) |
| 066161 | 066182 | 066203 | 200RD 3 T 3 | 3/8 ODF | | |
| 066162 | 066183 | 066204 | 200RD 3 T 4 | 1/2 ODF | 7.5 (26.4) | 18.01 (63.3) |
| 066163 | 066184 | 066205 | 200RD 4 T 3 | 3/8 ODF | | |
| 066164 | 066185 | 066206 | 200RD 4 T 4 | 1/2 ODF | 7.7 (27.1) | 18.62 (65.5) |
| 066165 | 066186 | 066181 | 200RD 4 T 5 | 5/8 ODF | | |
| 066166 | 066187 | 066208 | 200RD 5 T 3 | 3/8 ODF | 8.9 (31.3) | 21.49 (75.6) |
| 066167 | 066188 | 066209 | 200RD 5 T 4 | 1/2 ODF | | |
| 066168 | 066189 | 066210 | 200RD 5 T 5 | 5/8 ODF | 15.7 (55.2) | 37.62 (132.3) |
| 066169 | 066190 | 066211 | 200RD 6 T 4 | 1/2 ODF | | |
| 066170 | 066191 | 066212 | 200RD 6 T 5 | 5/8 ODF | 27.7 (97.6) | 67.66 (238.0) |
| 066172 | 066195 | 066214 | 200RD 7 T 5 | 5/8 ODF | | |
| 066173 | 066194 | 066215 | 200RD 7 T 7 | 7/8 ODF | 27.7 (97.6) | 67.66 (238.0) |
| 066174 | 066202 | 066216 | 200RD 9 T 5 | 5/8 ODF | | |
| 066175 | 066196 | 066217 | 200RD 9 T 7 | 7/8 ODF | 27.7 (97.6) | 67.66 (238.0) |
| 066176 | 066197 | 066218 | 200RD 9 T 9 | 1 1/8 ODF | | |

¹ Add "T" to the end of description for Mounting Stud

² Add "M" to the end of the description for Manual Stem

Capacities based on ARI standard.

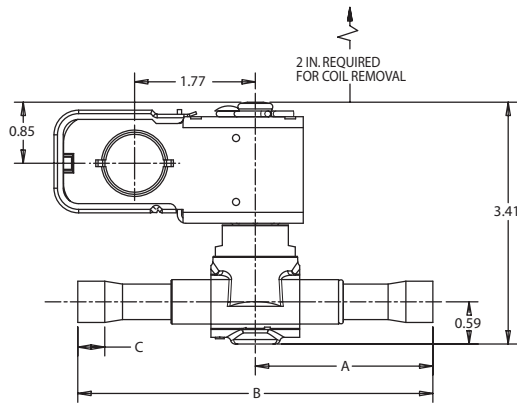
All ratings are based on largest connection size

*See Extended Capacity Tables for ratings at a wide range of conditions.

Ordering Information and Nominal Liquid Capacity Table for Bi-Flow Solenoids - Tons (kW)

| PCN | | | Description | Connection Size | R-12 | R-134a | R-22 | R-407C | R-404A/R-507 | R-502 | R-410A |
|----------------|---------------|-------------|-----------------|-----------------|--------------|--------------|--------------|--------------|--------------|--------------|--------------|
| Standard Valve | Mounting Stud | Manual Stem | | | | | | | | | |
| 016996 | -- | -- | 200RD3T3 VLC BF | 3/8 ODF | 3.04 (10.69) | 3.62 (12.73) | 4.80 (16.88) | 4.51 (15.86) | 2.52 (8.86) | 3.14 (11.04) | 4.50 (15.83) |
| 016997 | -- | -- | 200RD4T3 VLC BF | 3/8 ODF | 4.95 (17.41) | 6.00 (21.10) | 7.95 (27.96) | 7.48 (26.31) | 4.18 (14.70) | 5.21 (18.32) | 7.45 (26.20) |
| 016998 | -- | -- | 200RD5T4 VLC BF | 1/2 ODF | 5.20 (18.29) | 6.21 (21.84) | 8.22 (28.91) | 7.73 (27.19) | 4.33 (15.23) | 5.39 (18.96) | 7.71 (27.11) |
| 016999 | -- | -- | 200RD5T5 VLC BF | 5/8 ODF | | | | | | | |
| 017000 | -- | -- | 200RD6T5 VLC BF | 5/8 ODF | 6.01 (21.14) | 7.16 (25.18) | 9.48 (33.34) | 8.92 (31.37) | 4.99 (17.55) | 6.22 (21.87) | 8.89 (31.26) |

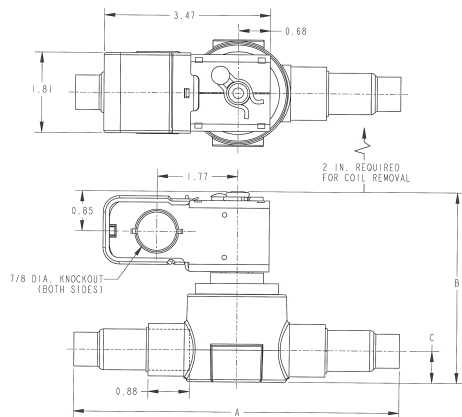
With Extended Ends



With Extended Ends

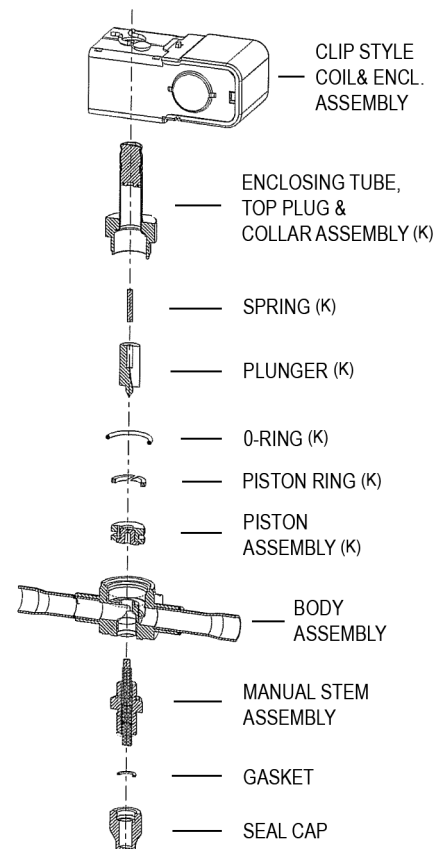
| Valve | Port Size | Conn. Size & Style | A | B | C |
|-----------|-----------|--------------------|------|------|------|
| 200RD 2T2 | 1/8 | 1/4 ODF | 2.42 | 4.62 | 0.25 |
| 200RD 2T3 | | 3/8 ODF | | | 0.31 |
| 200RD 3T2 | 3/16 | 1/4 ODF | | | 0.25 |
| 200RD 3T3 | | 3/8 ODF | | | 0.31 |
| 200RD 3T4 | 1/4 | 1/2 ODF | 2.50 | 5.00 | 0.38 |
| 200RD 4T4 | | 5/8 ODF | | | 0.50 |
| 200RD 4T5 | 5/16 | 3/8 ODF | 2.31 | 4.62 | 0.31 |
| 200RD 5T3 | | 1/2 ODF | | | 0.38 |
| 200RD 5T4 | 3/8 | 5/8 ODF | 3.25 | 6.50 | 0.50 |
| 200RD 5T5 | | 1/2 ODF | | | 0.38 |
| 200RD 6T4 | 3/8 | 1/2 ODF | 2.50 | 5.00 | 0.38 |
| 200RD 6T5 | | 5/8 ODF | | | 0.50 |

200RD7 and 200RD9 Dimensional Data (in)



| Valve | Port Size | Conn. Size & Style | A | B | C |
|----------|-----------|-----------------------|------|------|------|
| 200RD7S5 | 7/16 | 5/8 ODF x 7/8 ODM | 2.98 | 3.69 | 0.53 |
| 200RD7T5 | | 5/8 ODF x 5/8 ODF | 6.88 | | |
| 200RD7T7 | | 7/8 ODF x 7/8 ODF | 7.13 | | |
| 200RD9T5 | | 5/8 ODF x 5/8 ODF | 6.88 | | |
| 200RD9T6 | 9/16 | 3/4 ODF x 3/4 ODF | 7.38 | 4.05 | 0.68 |
| 200RD9T7 | | 7/8 ODF x 7/8 ODF | 7.13 | | |
| 200RD9T9 | | 1 1/8 ODF x 1 1/8 ODF | 8.50 | | |

Exploded View & Parts Kit Data



Valve Repair Kit

"K" indicates part is supplied in valve repair kit **KS30386**. (PCN 066223)

Gasket Kit

Gasket Kit **KG10025** (PCN 049190)
(contains 12 pieces - each of PTFE and neoprene O-rings)

Coil Assembly

See coil assemblies for availability.

Bi-Flow Conversion Kit

KS30387 (PCN 066224)
(Not available for 200RD7 and 200RD9)